

Healthcare for the Future
Consultation Launch
Press Conference

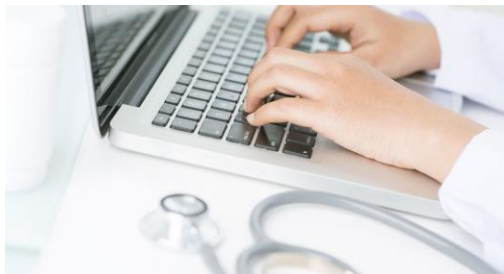
HEALTHCARE FOR THE
FUT▶RE
WEST|NORTH|EAST CUMBRIA

We face some big challenges...

- Overall population health is not good
- Difficulty attracting doctors, nurses and others
- Too many hospital admissions and long stays
- The NHS is significantly overspent
- CQC - some services inadequate or need improving

Now is the time to embrace change...

- Need to remove the uncertainties
- Need to tackle the difficult issues
- Need to take some tough decisions
- Need the public's help in making these decisions



We have a compelling vision...

***“A centre of excellence for integrated
health and social care provision
in rural, remote and dispersed communities”***

Delivery through Integrated Care Communities

- Joined up care - communities of 20k to 70k people
- Involving NHS, social care & voluntary sector
- Care at home or close to home
- More people remain independent for longer
- Reduce the need to attend or stay in hospital
- Greater use of technology & home adaptations

Integrated Care Communities + CHANGE =

- Safer services
- Of high quality
- That are clinically sustainable
- And financially sustainable



So what are the potential service changes we are consulting on?

Children's services

1. Inpatients at CIC and WCH but low-risk only at WCH
2. Inpatients at CIC with short stay assessment at WCH
3. Full consolidation at CIC



Maternity services

Antenatal and postnatal care continues at WCH and CIC with all options

1. Consultant-led maternity care at CIC and WCH
2. Midwife-led unit only at WCH
3. Full consolidation at CIC

Community hospital inpatient beds

Four options that see consolidation of inpatient beds

1. Consolidation on six hospital sites
2. Consolidation on five hospital sites
3. Consolidation on a different five hospital sites
4. Consolidation on three hospital sites

Emergency and acute care

Outpatient care and elderly care at CIC and WCH in all options

1. 24/7 A&E at CIC and WCH
2. 24/7 Urgent Care Centre and daytime A&E at WCH
3. 24/7 Urgent Care Centre but no A&E at WCH

Hyper-acute stroke services

Rehabilitation services at CIC and WCH with both options

1. Five day a week stroke services – as at present
2. Dedicated hyper-acute stroke service at CIC

The finance story

- Overspend now - £70m
- Overspend in 2020 - £163m (if we do nothing)
- More efficient working- can save £85m
- New ways of working – can save £45m
- Clinical changes – can save £2.1m

Decision making

- No decisions have been taken
- Nothing is pre-determined
- Decisions in the spring of 2017



The future for West Cumberland Hospital

- Some acute surgery returning
- Some trauma returning
- More planned surgery taking place
- Major new diagnostic suite planned
- Support for final redevelopment phase
- More people treated at WCH than before

www.wnecumbria.nhs.uk

HEALTHCARE FOR THE
FUTURE
WEST | NORTH | EAST CUMBRIA